



# CRIMAR INDUSTRIAL

USA, Canada, Chile, China, Colombia, Peru, RSA

[www.crimar.com](http://www.crimar.com) [www.sbcco-china.com](http://www.sbcco-china.com)



*Crimar Industrial for over 30 years has been providing high quality industrial equipment (tanks, piping, ductwork, roofs, process equipment, custom fabrication, and field installation and maintenance services) to our mining, municipal, petrochemical and other industrial customers around the world.*

*Through our sister company established in 2015 in China, the **Shijiazhuang Beman Commercial Co. Ltd. (SBC)** we can negotiate and enforce contracts with all of the rights and privileges of a Chinese company and provide complete quality control and expediting services.*





## Roger Beman

- Over 30 years of experience in the design, manufacture and installation of industrial products for customers around the world
- Over 30 years of international sales and purchasing experience
- Fluent in English, Spanish & French
- Since 2006 over 130 trips to China to ensure quality and compliance
- 100% owner Crimar Industrial, 70% owner Shijiazhuang Beman Commercial Co. Ltd.



Our regular customer base includes companies such as: WesTech, FLSmidth, Glencore Mining, Hatch Engineering, CODELCO, Phelps Dodge, Jacobs Engineering, ASARCO, M3 Engineering, IMC Kalium, Abbott Labs, Intrepid Potash, Siemens/US Filter, Biorem, Pemex, Grupo Mexico and many others.



# Background

## Sales & Support:

We have sales & support offices in Tucson, AZ; Canada (Toronto); Santiago (Chile); Lima (Peru), Shijiazhuang (China), Johannesburg (RSA), and Medellin (Colombia). Our office in China (Shijiazhuang Beman Commercial Co. Ltd.) provides complete sourcing, QC, import - export and expediting.

## Design:

While we have extensive internal expertise in design and fabrication, we also have the full support of the design centers at our subcontract facilities .

## Fabrication:

All design, fabrication and inspection is in accordance with international standards such as ASME U, API and others. Third party inspectors are contracted to ensure that code stamped vessels meet the project requirements.



# CRIMAR / SBC

Crimar/SBC have been providing steel tanks, process vessels and piping systems to our customers for over 20 years, designed, built and tested in accordance with the appropriate international standards



Stainless and carbon steel tanks, piping and process vessels for M3 Engineering/Gold Corp in Mexico



Storage and process vessels for Jacobs Engineering/FMI Safford Acid Plant



# Shijiazhuang Beman Commercial Co. Ltd.

In 2015 we registered a “foreign owned” corporation located in Shijiazhuang, Hebei China that provides the following:

- 1) Local support for sourcing and quality control
- 2) A legal entity in China that has full authority under Chinese law to sign and enforce contracts
- 3) Import and export licenses to handle all arrangements related to shipping and receiving local and international shipments
- 4) Local invoicing, certificates of origin, and administrative functions
- 5) Bilingual staff to ensure that all documentation is clearly understandable



# CRIMAR / SBC



## CHINA FABRICATION



75' and 50' steel covers made in China for Ovivo projects in the US

Boiler for Glencore PASAR



Rubber lined feedwells and piping for Paterson-Cooke Kumptor project



# CRIMAR / SBC



## CHINA FABRICATION



Carbon and stainless piping for Glencore PASAR



Control and Teflon lined valves for Glencore PASAR



Stainless steel acid cooler tube bundles for Glencore Minara

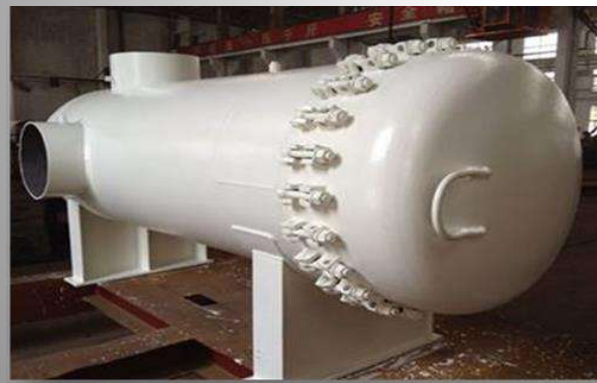


SBC Field assembly onsite support PASAR



# CRIMAR / SBC

CHINA FABRICATION



Pressure filters and process equipment for SPX/Praxair





# CRIMAR / SBC

CHINA FABRICATION



Duplex and rubber lined steel pipe spools for WesTech/Jacobs Engineering Morocco including prefabrication, in process and final inspection meetings with client QC representative



# CRIMAR / SBC

CHINA FABRICATION



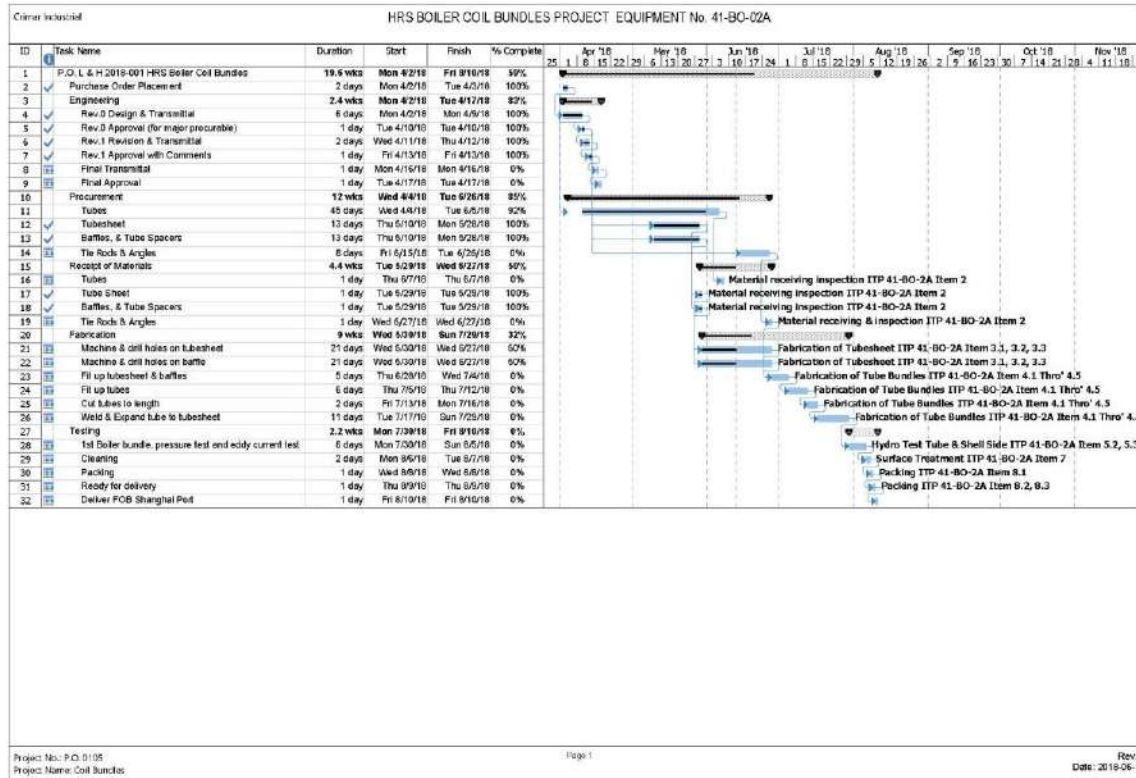
Pressure vessels for PTS Mexico



Filter housings SPX Korea



# PRODUCTION TRACKING



Production schedules and Inspection & Test Plans are submitted to customers in accordance with the project requirements



# QUALITY CONTROL



Page 1 of 8

Report no 18-12006-502-11	Project no 4768981	Report date Jan. 9, 2019	Office Shanghai, China
------------------------------	-----------------------	-----------------------------	---------------------------

## REPORT OF ACTIVITY

<b>General scope of activity</b> Third Party Inspection of Pressure Vessel	<b>Dates of all related activity</b> Oct. 31, 2018 thru Jan. 8, 2019
<b>Client</b> Company name: Shouzhong Beman Commercial Co., Ltd Address: No. 1-1-1810, Lehai Cheng, No.11 Zhongnan East Road, Shizhuzhuang, Heping, PRC. Contact(s): Mr. Roger Beman / Zish Zhou PO/Shop/contract or job no.	<b>Supplier</b> Company name: Shanghai L&H Stainless Equipment Co., Ltd Address: 1880 Cheng Liu Mid Road, Kuaib Township, Jia Ding Borough, Shanghai, PRC. Contact(s): Mr. Kan Xu PO/Shop/contract or job no.
<b>Subvendor -1</b> Company name: Address: Contact(s): PO/Shop/contract or job no.	<b>Subvendor -2</b> Company name: Address: Contact(s): PO/Shop/contract or job no.
<b>Component description(s)</b> Two (2) Units of Tube Bundle	<b>Results</b> Meets requirements <input checked="" type="checkbox"/> Subject to condition(s) noted <input type="checkbox"/> Does not meet requirements <input type="checkbox"/>

This is to certify that the undersigned did at the request of **Shouzhong Beman Commercial Co., Ltd** attend the **Shanghai L&H Stainless Equipment Co., Ltd** located at **1880 Cheng Liu Mid Road, Kuaib Township, Jia Ding Borough, Shanghai** on **Oct. 31, 2018** and subsequent date(s) in order to carry out the scope of services described below.

### 1.0 Scope of service activity

The scope of activity included in accordance with ITP 18026-1-0102 Rev 6 is the following:

- 1.1 Verify pressure part markings and review design certificate.
- 1.2 Review PMI report on tube sheet & 5% of tubes.
- 1.3 Check report of tubes bends for quality Rows 1 & 2.
- 1.4 Check tube bends for heat treat.
- 1.5 Verify coil ing programs.
- 1.6 Machine, drill and inspect all dimensions to ensure within tolerance.
- 1.7 Verify surface roughness as per QA #30492.
- 1.8 Check that tube ends & tube holes in tube sheet condition before installation.
- 1.9 Check nozzlehead / baffle orientations and dimensional accuracy.
- 1.10 100% Visual inspection of Tube to Tube sheet weld - first pass.
- 1.11 100% RT of Tube to Tube sheet weld - second pass.
- 1.12 Verify the weld size of tube to tube sheet connections.
- 1.13 Slightly expand tubes into tube sheet, nominated area as per drawing (Max. 5% wall thinning).  
Testing shall be limited to 2% of the total connections on tube sheet.
- 1.14 Witness of hydrostatic pressure testing.

This Report is issued subject to the condition that it is validated and signed that nothing herein contained shall be deemed to be any acceptance, manufacturer's certificate, or evidence of compliance, or evidence of any liability, or evidence of the liability of ABS Consulting, Inc. (hereinafter referred to as ABS Consulting) and is limited to the site or location of the inspection, quality or non-compliance. There is no assurance whatsoever that ABS Consulting will be held liable for any injury or damage to any person or property resulting from reliance on this report or use of this report, including equipment or other items, unless those items are specifically mentioned in this report, and only upon the terms and conditions set forth in this report.

Form IS-2  
Revising: 02-162-00 P02      Attachment D - Rev. 1

FORM IS-2 MANUFACTURER'S QUALITY CONTROL WITH PRESSURE VESSELS  
Laboratory Form for 5th Edition, Completely Blank or Blank (Optional) (Variable Only)  
As Required by the Provision of the ASME Boiler and Pressure Vessel Code (see Section VIII, Division 1, Appendix 1)

The undersigned certifies that the information provided in this report is true and correct to the best of his/her knowledge and belief.

1. Project Name: \_\_\_\_\_  
2. Client Name: \_\_\_\_\_  
3. Project Location: \_\_\_\_\_  
4. Project Start Date: \_\_\_\_\_  
5. Project End Date: \_\_\_\_\_  
6. Project Description: \_\_\_\_\_  
7. Project Manager: \_\_\_\_\_  
8. Project Engineer: \_\_\_\_\_  
9. Project Inspector: \_\_\_\_\_  
10. Project Designer: \_\_\_\_\_  
11. Project Fabricator: \_\_\_\_\_  
12. Project Erector: \_\_\_\_\_  
13. Project Owner: \_\_\_\_\_  
14. Project Operator: \_\_\_\_\_  
15. Project Maintenance: \_\_\_\_\_  
16. Project Commissioning: \_\_\_\_\_  
17. Project Decommissioning: \_\_\_\_\_  
18. Project Dismantling: \_\_\_\_\_  
19. Project Recycling: \_\_\_\_\_  
20. Project Disposal: \_\_\_\_\_

21. Project Status: \_\_\_\_\_  
22. Project Phase: \_\_\_\_\_  
23. Project Milestone: \_\_\_\_\_  
24. Project Risk: \_\_\_\_\_  
25. Project Impact: \_\_\_\_\_  
26. Project Benefit: \_\_\_\_\_  
27. Project Cost: \_\_\_\_\_  
28. Project Revenue: \_\_\_\_\_  
29. Project Profit: \_\_\_\_\_  
30. Project Loss: \_\_\_\_\_  
31. Project Return: \_\_\_\_\_  
32. Project Yield: \_\_\_\_\_  
33. Project Defect: \_\_\_\_\_  
34. Project Scrap: \_\_\_\_\_  
35. Project Rework: \_\_\_\_\_  
36. Project Waste: \_\_\_\_\_  
37. Project Emission: \_\_\_\_\_  
38. Project Pollution: \_\_\_\_\_  
39. Project Noise: \_\_\_\_\_  
40. Project Vibration: \_\_\_\_\_  
41. Project Temperature: \_\_\_\_\_  
42. Project Humidity: \_\_\_\_\_  
43. Project Air Quality: \_\_\_\_\_  
44. Project Water Quality: \_\_\_\_\_  
45. Project Soil Quality: \_\_\_\_\_  
46. Project Noise Level: \_\_\_\_\_  
47. Project Vibration Level: \_\_\_\_\_  
48. Project Temperature Level: \_\_\_\_\_  
49. Project Humidity Level: \_\_\_\_\_  
50. Project Air Quality Level: \_\_\_\_\_  
51. Project Water Quality Level: \_\_\_\_\_  
52. Project Soil Quality Level: \_\_\_\_\_  
53. Project Noise Level (dB): \_\_\_\_\_  
54. Project Vibration Level (mm/s): \_\_\_\_\_  
55. Project Temperature Level (°C): \_\_\_\_\_  
56. Project Humidity Level (%): \_\_\_\_\_  
57. Project Air Quality Level (ppm): \_\_\_\_\_  
58. Project Water Quality Level (mg/L): \_\_\_\_\_  
59. Project Soil Quality Level (mg/kg): \_\_\_\_\_  
60. Project Noise Level (dBA): \_\_\_\_\_  
61. Project Vibration Level (g): \_\_\_\_\_  
62. Project Temperature Level (°F): \_\_\_\_\_  
63. Project Humidity Level (RH): \_\_\_\_\_  
64. Project Air Quality Level (ppb): \_\_\_\_\_  
65. Project Water Quality Level (µg/L): \_\_\_\_\_  
66. Project Soil Quality Level (µg/g): \_\_\_\_\_  
67. Project Noise Level (dB): \_\_\_\_\_  
68. Project Vibration Level (m/s²): \_\_\_\_\_  
69. Project Temperature Level (°C): \_\_\_\_\_  
70. Project Humidity Level (%): \_\_\_\_\_  
71. Project Air Quality Level (ppm): \_\_\_\_\_  
72. Project Water Quality Level (mg/L): \_\_\_\_\_  
73. Project Soil Quality Level (mg/kg): \_\_\_\_\_  
74. Project Noise Level (dB): \_\_\_\_\_  
75. Project Vibration Level (g): \_\_\_\_\_  
76. Project Temperature Level (°F): \_\_\_\_\_  
77. Project Humidity Level (RH): \_\_\_\_\_  
78. Project Air Quality Level (ppb): \_\_\_\_\_  
79. Project Water Quality Level (µg/L): \_\_\_\_\_  
80. Project Soil Quality Level (µg/g): \_\_\_\_\_

We work closely with third part inspection companies such as ABS Consulting, Veritas, TUV/Rheinland, and Moody to provide our customers with the certifications showing that the finished products meet the project specifications



# SHIPPING



UPON COMPLETION AND ACCEPTANCE OF FINAL QUALITY CONTROL REPORTS, THE PRODUCTS ARE PACKED IN SEAWORTHY SHIPPING FRAMES OR CRATES. BILLS OF LADING AND COMMERCIAL INVOICES ARE SUBMITTED TO THE APPROVED SHIPPER





# CRIMAR INDUSTRIAL

SHIJIAZHUANG BEMAN COMMERCIAL CO. LTD.

EQUIPO INDUSTRIAL PARA EL MERCADO INTERNACIONAL  
INDUSTRIAL EQUIPMENT FOR THE INTERNATIONAL MARKET

Sales offices: USA, Africa, Brazil, Chile, China, Peru

[www.CRIMAR.com](http://www.CRIMAR.com) [www.SBCCO-CHINA.com](http://www.SBCCO-CHINA.com)



Crimar Industrial/SBCCO provide a wide range of industrial equipment for projects around the world



Centrifugal pumps



Filter presses & plates



Hydrocyclones



Fiberglass tanks & process vessels



Gears and mill heads



Crushers



Dryers/steel fabrication



Ceramic filters



Pressure vessels



Duct Systems



# CRIMAR / SBC



*We can help you from the beginning of the project through completion.*

*We can assist with the design, fabrication, and shipping of the products sold.  
Where appropriate we can also provide on site fabrication or assembly.*

*Once the installation is complete, we can provide ongoing support and  
maintenance services.*

*How can we help YOU?*

*Offices in the USA, Canada, Chile, China, Colombia, Mexico, Peru, South Africa*

*[www.crimar.com](http://www.crimar.com)*

*[www.sbcco-china.com](http://www.sbcco-china.com)*

*[rbeman@crimar.com](mailto:rbeman@crimar.com)*